



120W (1/6 HP)

SPEED CONTROL & BRAKE REVERSIBLE MOTORS Frame size 90mm sq. (3.54 in. sq.)

Single-Phase

LEAD WIRE TYPE

SPECIFICATIONS

30MIN. DUTY, INSULATION CLASS A or E, 4POLES

Model	Output (W)	Voltage (V)	Freq. (Hz)	Input (W)	Max. Current (A)	Permissible Torque						Speed Range (rpm)	Starting Torque			Capacitor (μ F)
						1200(rpm)			900(rpm)				(kg-cm)	(N-m)	(oz-in)	
L9R120□CHES	120	1 \varnothing 100	50 60	280 280	3.2 3.4	7.4 6.2	0.725 0.608	102.76 86.10	5.8 5.8	0.568 0.568	80.54 80.54	90~1400 90~1700	7.5 7.5	0.735 0.735	104.15 104.15	40
L9R120□DHES	120	1 \varnothing 200	50 60	280 280	1.55 1.70	7.4 6.2	0.725 0.608	102.76 86.10	5.8 5.8	0.568 0.568	80.54 80.54	90~1400 90~1700	7.5 7.5	0.735 0.735	104.15 104.15	10
L9R120□BHES	120	1 \varnothing 220	60	280	1.60	8.4	0.823	116.65	6	0.588	83.32	90~1700	8.5	0.833	118.04	9
L9R120□EHES	120	1 \varnothing 115	60	280	3.3	6.2	0.608	86.10	5.8	0.568	80.54	90~1700	7	0.686	97.21	30
L9R120□XHES	120	1 \varnothing 220~240	50	280	1.50	7.4	0.725	102.76	6	0.568	83.32	90~1400	8.3	0.813	115.26	9

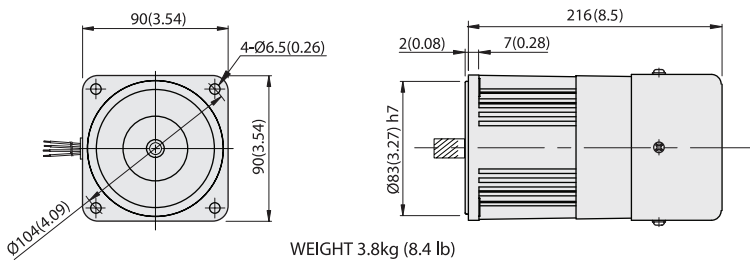
- * Model in grey screen represents the motors with THERMALLY PROTECTED according to UL regulation.
- * Model in dark grey screen represents the motors with THERMALLY PROTECTED according to CE regulation.
- * In case of some models certificated for export, the special cord like CE or UL is added after the existing model no. ex) L9I60 □XH-CE, L9I60 □EH-UL.
- * Insulation class for motors which acquired certificates for export is B.

SPEED CONTROL & BRAKE REVERSIBLE MOTORS

DIMENSIONS

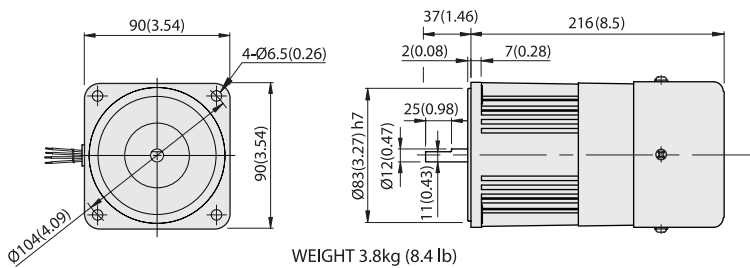
L9R120P□HES

Unit : mm(inch)



WEIGHT 3.8kg (8.4 lb)

L9R120D□LES

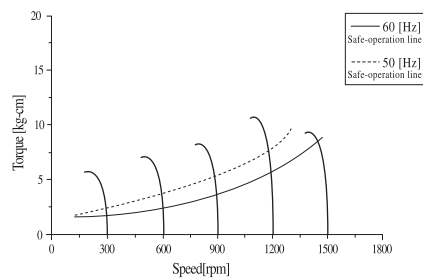


WEIGHT 3.8kg (8.4 lb)



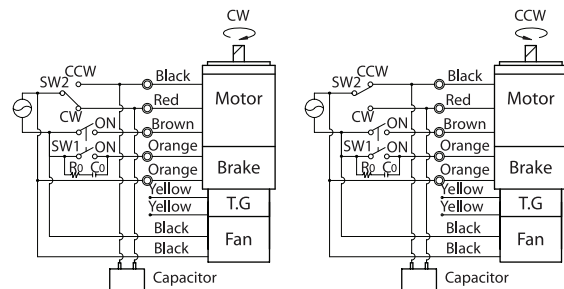
SPEED-TORQUE CURVE

Single phase L9R120□□HES



CONNECTION DIAGRAMS

Standard or with T.P.(Thermal protector)



The direction of rotation is seen from the end of motor shaft.